

*Blumarine*  
HOME COLLECTION

DIGITAL WALLPAPERS

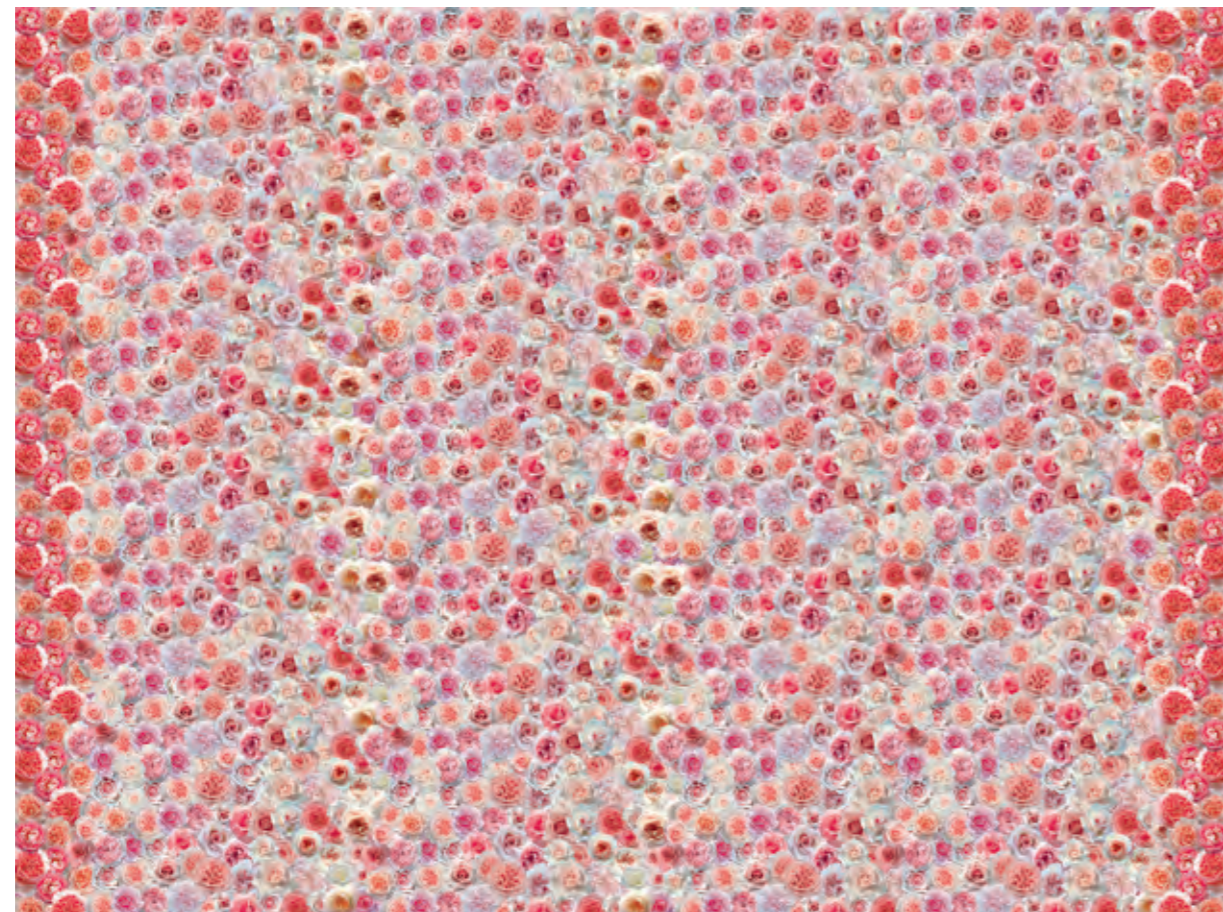
# *Blumarine*

HOME COLLECTION

**All'interno di questa raccolta di tutti i pannelli Blumarine, sono presentate nuove proposte per rendere unico ogni ambiente della casa. Sarà possibile creare atmosfere eleganti, moderne, classiche, raffinate e lussuose. Basterà decorare una parete con uno di questi pannelli per avere vere e proprie opere d'arte firmate Blumarine.**

**Within this collection of Blumarine panels, you will find new designs to give you the opportunity to make your rooms unique. You will be able to create elegant, modern, classic, refined and luxurious atmospheres. It will be enough to decorate a wall with one of these panels to have a real works of art signed Blumarine.**

## GLAMOUR



cod. BM27101

width 4 m / height 3 m / 4 lengths



*Blumarine*  
HOME COLLECTION

DIGITAL WALLPAPERS

## VEDUTA



cod. BM27102

width 4 m / height 3 m / 4 lengths



*Blumarine*  
HOME COLLECTION

DIGITAL WALLPAPERS

## BOUQUET INCANTATO



cod. BM27103

width 4 m / height 3 m / 4 lengths



*Blumarine*  
HOME COLLECTION

DIGITAL WALLPAPERS

## MAGIA



cod. BM27104

width 4 m / height 3 m / 4 lengths



*Blumarine*  
HOME COLLECTION

## FENICOTTERI



cod. BM27105

width 3 m / height 3 m / 3 lengths

## UNITO FENICOTTERI



cod. BM27109

width 3 m / height 3 m / 3 lengths



*Blumarine*  
HOME COLLECTION

DIGITAL WALLPAPERS

## RIGA BLUMARINE



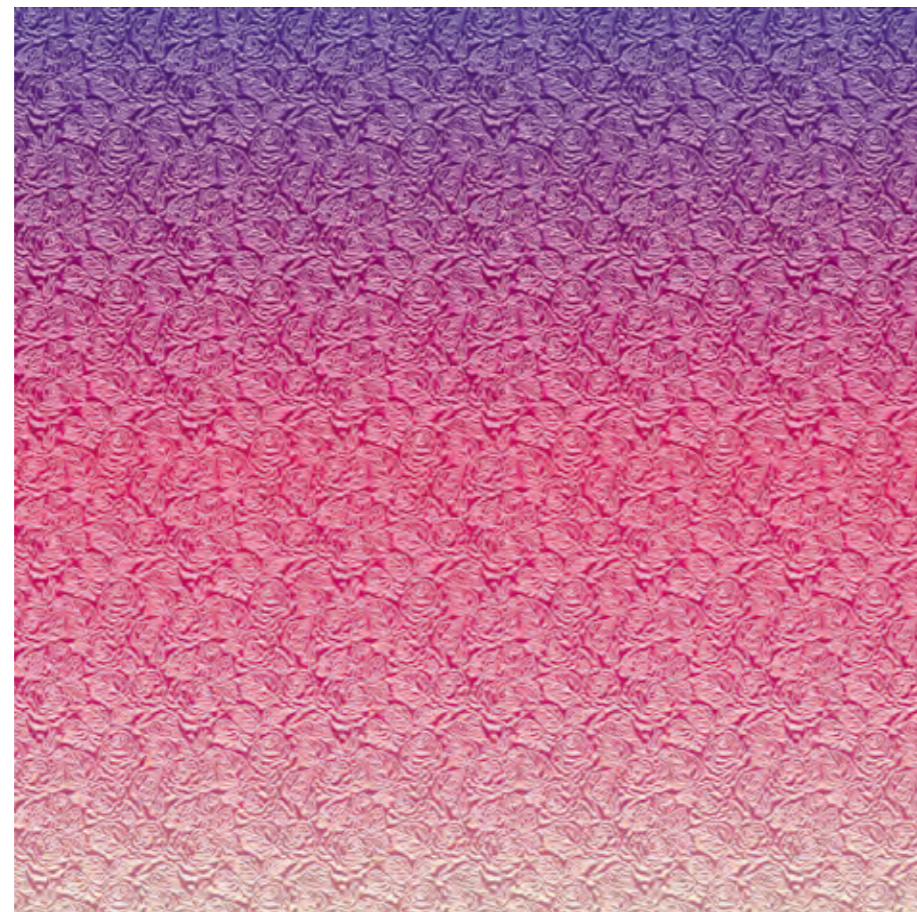
cod. BM27106

width 2 m / height 3 m / 2 lengths



*Blumarine*  
HOME COLLECTION

## SFUMATURA DI ROSE



cod. BM27107

width 3 m / height 3 m / 3 lengths



*Blumarine*  
HOME COLLECTION

DIGITAL WALLPAPERS

## LOVE BLUMARINE



cod. BM27108

width 4 m / height 3 m / 4 lengths



*Blumarine*  
HOME COLLECTION

## FIORI DI CAMPO



cod. BM26102

width 2 m / height 3 m / 2 lengths

## UNITO FIORI DI CAMPO



cod. BM26103

width 2 m / height 3 m / 2 lengths



*Blumarine*  
HOME COLLECTION

DIGITAL WALLPAPERS

**MAGIA DI  
FARFALLE**



cod. BM26105

width 2 m / height 3 m / 2 lengths

**UNITO MAGIA  
DI FARFALLE**



cod. BM26106

width 1 m / height 3 m / 1 length



*Blumarine*  
HOME COLLECTION

DIGITAL WALLPAPERS

## DECORO TROPICALE



cod. BM26108

width 2 m / height 3 m / 2 lengths



*Blumarine*  
HOME COLLECTION

DIGITAL WALLPAPERS

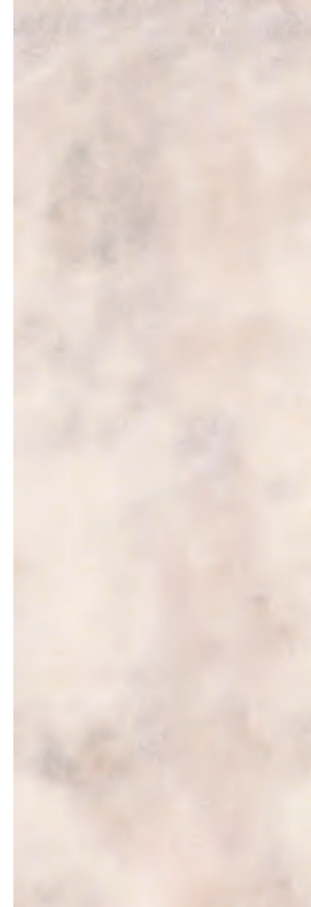
## PRIMAVERA



cod. BM26110

width 2 m / height 3 m / 2 lengths

## UNITO PRIMAVERA



cod. BM26111

width 1 m / height 3 m / 1 length



*Blumarine*  
HOME COLLECTION

DIGITAL WALLPAPERS

## SOGNO PREZIOSO



cod. BM26113

width 2 m / height 3 m / 2 lengths



*Blumarine*  
HOME COLLECTION

DIGITAL WALLPAPERS

## TROPICAL BLUMARINE



cod. BM26115

width 2 m / height 3 m / 2 lengths



*Blumarine*  
HOME COLLECTION

DIGITAL WALLPAPERS

## FARFALLE GIOIELLO



cod. BM26117

width 2 m / height 3 m / 2 lengths

## UNITO FARFALLE GIOIELLO



cod. BM26118

width 1 m / height 3 m / 1 length



*Blumarine*  
HOME COLLECTION

## GIARDINO FIORITO



cod. BM26120

width 3 m / height 3 m / 3 lengths



*Blumarine*  
HOME COLLECTION

DIGITAL WALLPAPERS

## INCANTO FLOREALE



cod. BM26122

width 2 m / height 3 m / 2 lengths



*Blumarine*  
HOME COLLECTION

## GIARDINO MAGICO



cod. BM26124

width 3 m / height 3 m / 3 lengths



*Blumarine*  
HOME COLLECTION

DIGITAL WALLPAPERS

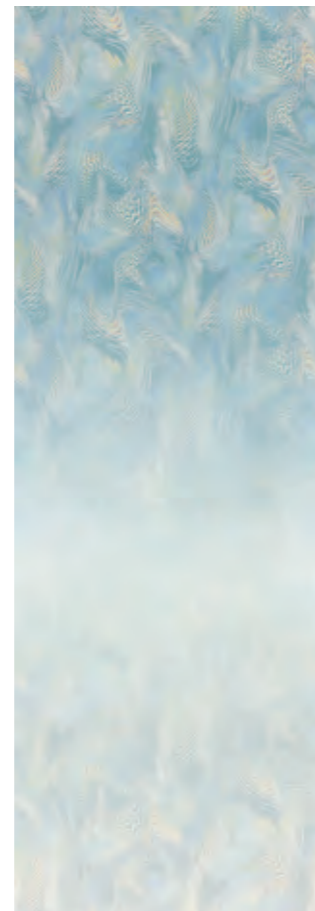
**FANTASIA DI  
FARFALLE**



cod. BM25224

width 1 m / height 3 m / 1 length

**UNITO FANTASIA  
DI FARFALLE**



cod. BM25225

width 1 m / height 3 m / 1 length



*Blumarine*  
HOME COLLECTION

**BATTITO  
DI ALI**



cod. BM25221

width 2 m / height 3 m / 2 lengths

**UNITO  
BATTITO DI ALI**



cod. BM25222

width 1 m / height 3 m / 1 length



*Blumarine*  
HOME COLLECTION

## SOFFIO



cod. BM25216

width 2 m / height 3 m / 2 lengths



*Blumarine*  
HOME COLLECTION

DIGITAL WALLPAPERS

## FIABA DEL BOSCO



cod. BM25218

width 2 m / height 3 m / 2 lengths

## UNITO FIABA DEL BOSCO



cod. BM25219

width 1 m / height 3 m / 1 length



*Blumarine*  
HOME COLLECTION

DIGITAL WALLPAPERS

**ROSE  
ANTICHE**



cod. BM25202

width 2 m / height 3 m / 2 lengths

**UNITO ROSE  
ANTICHE**



cod. BM25203

width 1 m / height 3 m / 1 length



*Blumarine*  
HOME COLLECTION

DIGITAL WALLPAPERS

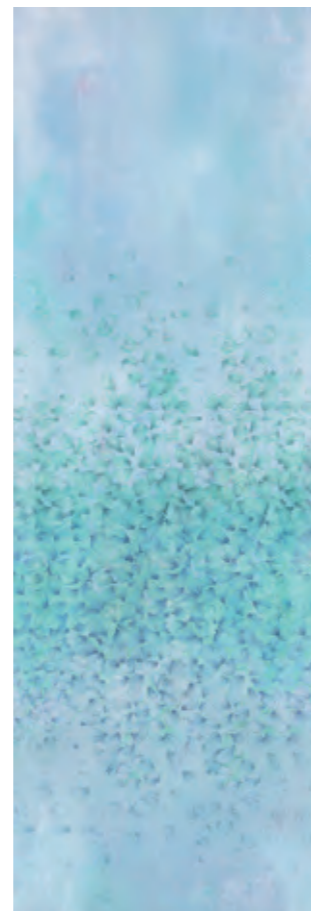
**ROSA  
INCANTATA**



cod. BM25233

width 2 m / height 3 m / 2 lengths

**UNITO ROSA  
INCANTATA**



cod. BM25234

width 1 m / height 3 m / 1 length



*Blumarine*  
HOME COLLECTION

DIGITAL WALLPAPERS

## BOUGANVILLE



cod. BM25227

width 2 m / height 3 m / 2 lengths

## UNITO BOUGANVILLE



cod. BM25228

width 1 m / height 3 m / 1 length



*Blumarine*  
HOME COLLECTION

DIGITAL WALLPAPERS

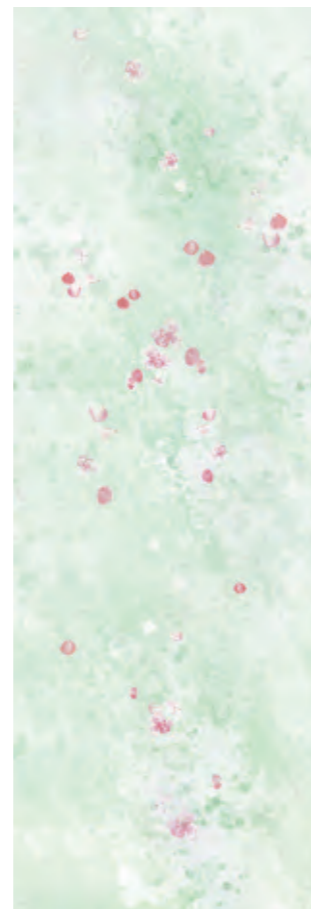
**PROFUMO  
DI ROSE**



cod. BM25213

width 2 m / height 3 m / 2 lengths

**UNITO PROFUMO  
DI ROSE**



cod. BM25214

width 1 m / height 3 m / 1 length



*Blumarine*  
HOME COLLECTION

DIGITAL WALLPAPERS

## MAGIA DI IRIS



cod. BM25236

width 2 m / height 3 m / 2 lengths



*Blumarine*  
HOME COLLECTION

DIGITAL WALLPAPERS

## TULIPANI



cod. BM25230

width 2 m / height 3 m / 2 lengths

## UNITO TULIPANI



cod. BM25231

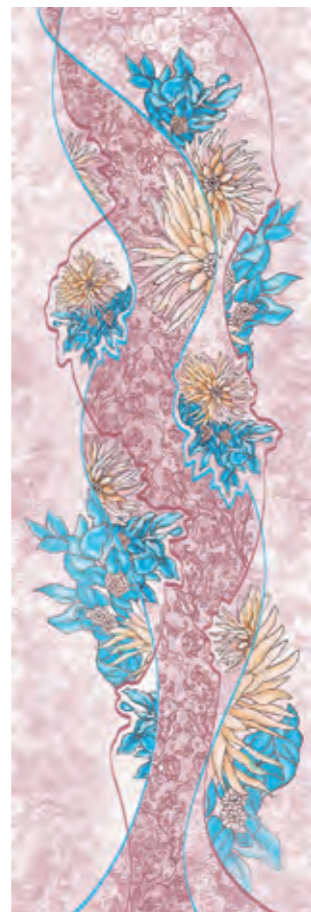
width 1 m / height 3 m / 1 length



*Blumarine*  
HOME COLLECTION

DIGITAL WALLPAPERS

## SIRENA



cod. BM25211

width 1 m / height 3 m / 1 length



*Blumarine*  
HOME COLLECTION

**SOGNO  
BAROCCO**



cod. BM25208

width 2 m / height 3 m / 2 lengths

**UNITO SOGNO  
BAROCCO**



cod. BM25209

width 1 m / height 3 m / 1 length



*Blumarine*  
HOME COLLECTION

DIGITAL WALLPAPERS

## ANNA



cod. BM24123

width 3 m / height 3 m / 3 lengths



*Blumarine*  
HOME COLLECTION

DIGITAL WALLPAPERS

## BOUQUET



cod. BM24119

width 2 m / height 3 m / 2 lengths



*Blumarine*  
HOME COLLECTION

DIGITAL WALLPAPERS

## GIOIOSO



cod. BM24121

width 1 m / height 3 m / 1 length



*Blumarine*  
HOME COLLECTION

## ROSA ROMANTICA



cod. BM24122

width 1 m / height 3 m / 1 length



*Blumarine*  
HOME COLLECTION

## VELATO



cod. BM24120

width 1 m / height 3 m / 1 length



*Blumarine*  
HOME COLLECTION

# DIGITAL BASES

## VINYL NON WOVEN BACKING



### Codice A - CARATTERISTICHE TECNICHE

Supporto: Vinilico con tessuto non tessuto  
Larghezza: 100 cm  
Peso: 380 gr/m<sup>2</sup> (+/- 10%)  
Resistenza al fuoco: Classe B-s2, d0  
Tipo di colla raccomandata: METYLAN - Henkel S.p.A. per TNT

### Code A - TECHNICAL FEATURES

Support: Vinyl with non-woven backing  
Width: 100 cm  
Weight: 380 gr/m<sup>2</sup> (+/- 10%)  
Fire resistance: Class B-s2, d0  
Recommended type of adhesive: METYLAN - Henkel S.p.A. for non-woven backing



## SOFT-TOUCH NON WOVEN BACKING



### Codice Q - CARATTERISTICHE TECNICHE

Supporto: Vinilico con tessuto non tessuto  
Larghezza: 100 cm  
Peso: 380 gr/m<sup>2</sup> (+/- 10%)  
Resistenza al fuoco: Classe B-s2, d0  
Tipo di colla raccomandata: METYLAN - Henkel S.p.A. per TNT

### Code Q - TECHNICAL FEATURES

Support: Vinyl with non-woven backing  
Width: 100 cm  
Weight: 380 gr/m<sup>2</sup> (+/- 10%)  
Fire resistance: Class B-s2, d0  
Recommended type of adhesive: METYLAN - Henkel S.p.A. for non-woven backing



## PURE NON WOVEN SUPPORT



### Codice J - CARATTERISTICHE TECNICHE

Supporto: Tessuto non tessuto  
Larghezza: 100 cm  
Peso: 150 gr/m<sup>2</sup> (+/- 10%)  
Resistenza al fuoco: Classe B-s1, d0  
Tipo di colla raccomandata: METYLAN - Henkel S.p.A. per TNT

### Code J - TECHNICAL FEATURES

Support: Non-woven backing  
Width: 100 cm  
Weight: 150 gr/m<sup>2</sup> (+/- 10%)  
Fire resistance: Class B-s1, d0  
Recommended type of adhesive: METYLAN - Henkel S.p.A. for non-woven backing



## GLASS FIBER



Stampa su supporto fibra di vetro con primer di finitura (resina impermeabilizzante) già applicato  
Printed on fiberglass support with finishing primer (waterproofing resin) already applied

### Codice O - CARATTERISTICHE TECNICHE

Supporto: Fibra di vetro  
Larghezza: 95 cm  
Peso: 195 gr/m<sup>2</sup> (+/- 15%)  
Tipo di colla raccomandata: Mapei ADESILEX MT 32

Forniamo su richiesta kit completi di preparazione della base di applicazione e di protezione finale del pannello per applicazione in ambienti umidi. Ogni kit contiene Superpink® bicomponente e Kappa® opaca batteriostatica adatti a ricoprire una superficie di circa 6 m<sup>2</sup>. La colla non è compresa.

(\*) simbologia valida solo con l'applicazione del primer finale.

### Code O - TECHNICAL FEATURES

Support: Glass fiber  
Width: 95 cm  
Weight: 195 gr/m<sup>2</sup> (+/- 15%)  
Recommended type of adhesive: Mapei ADESILEX MT 32

On demand, we supply complete kits for the preparation of the application base and for the final protection of the digital mural panel, for installation in humid environments. Each kit contains two-component Superpink® and bacteriostatic matt Kappa® suitable for covering an area of approximately 6 square meters. Glue is not included.

(\*) symbology valid only with the application of the final primer.





Produced by: **INDUSTRIE EMILIANA PARATI S.p.A.**  
via Case Sparse, 21 | 26041 Casalmaggiore (CR), Italy | ph. +39 0375 283011  
[www.emilianaparati.com](http://www.emilianaparati.com) | [info@emilianaparati.it](mailto:info@emilianaparati.it)